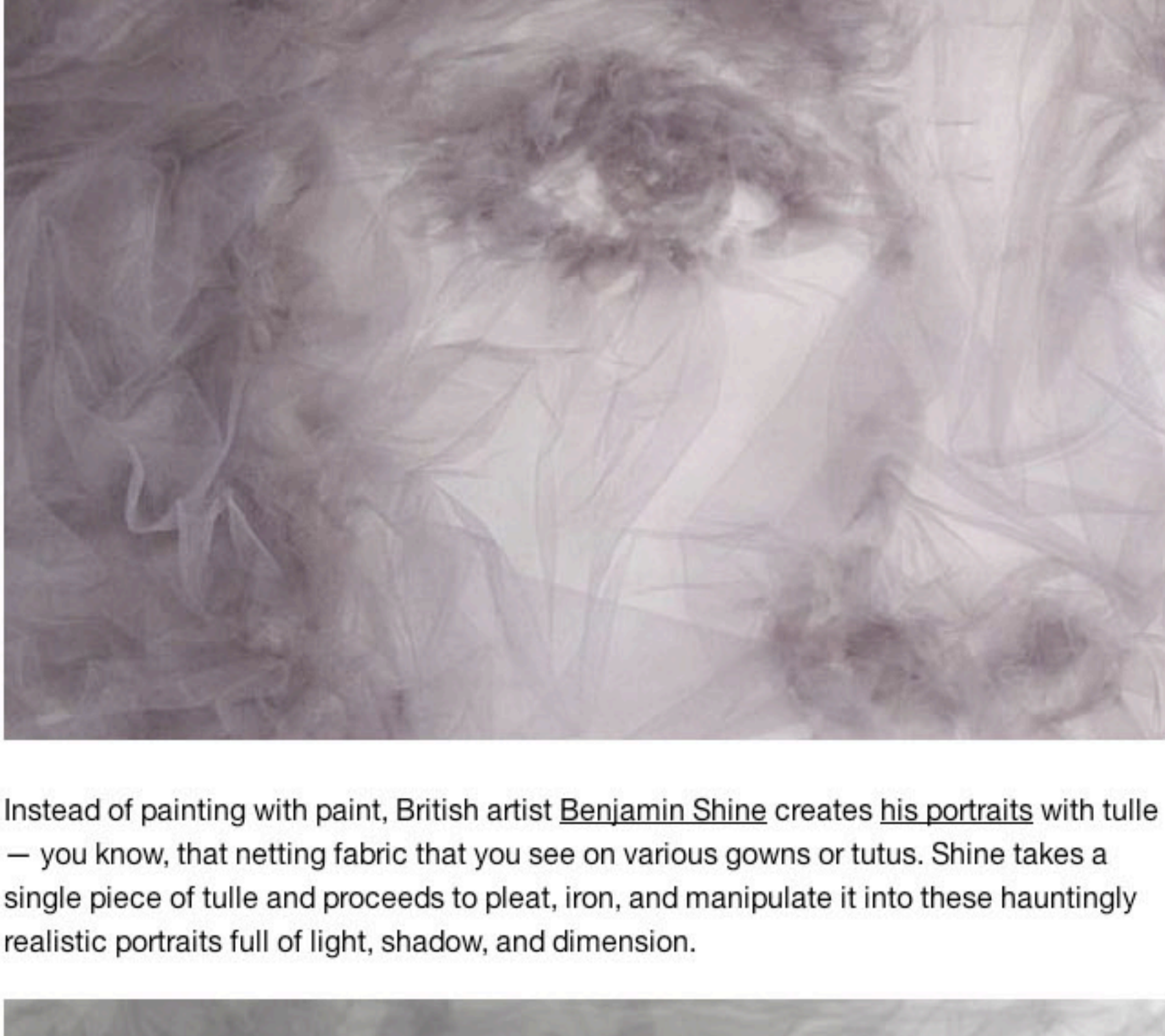


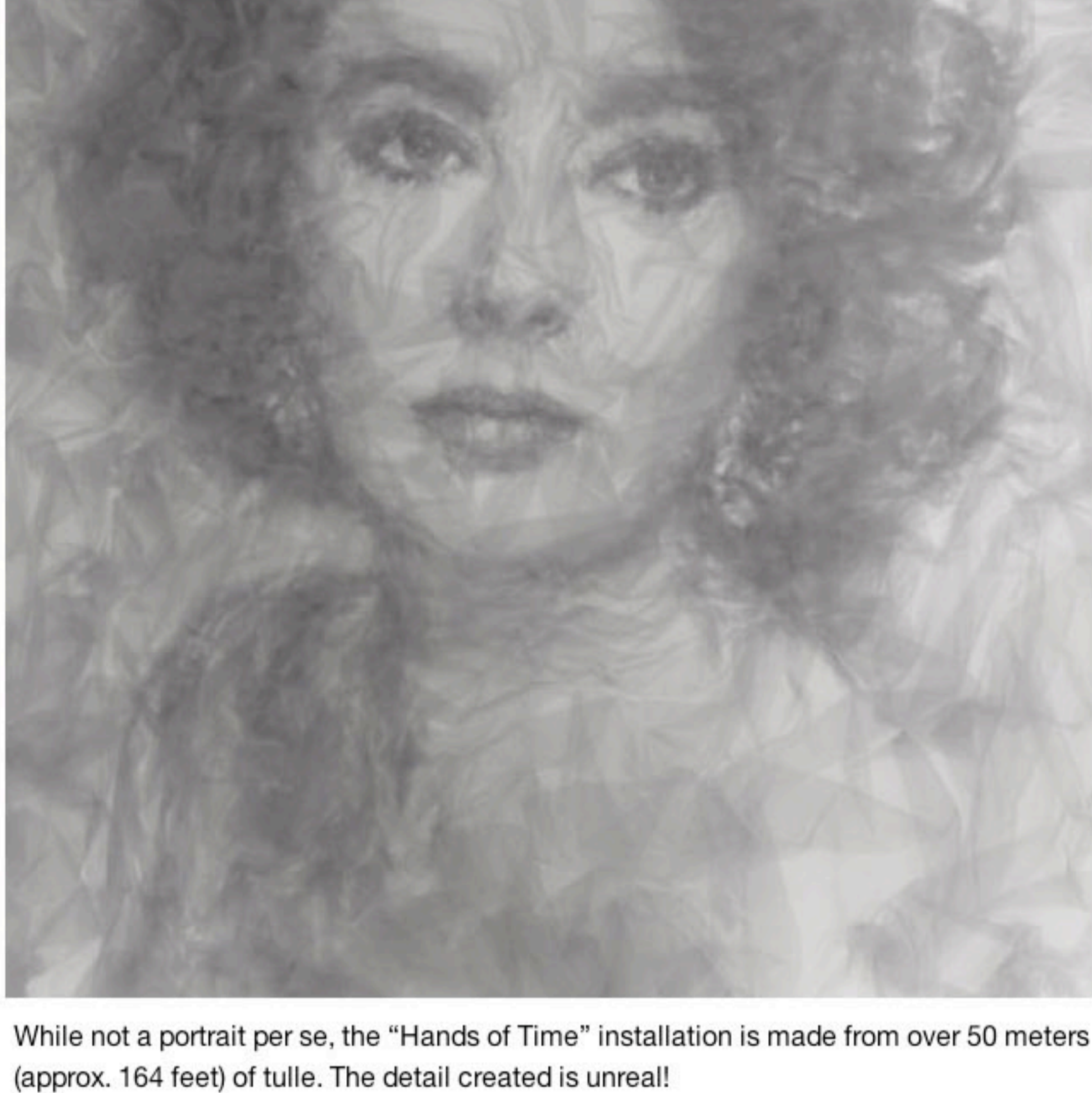
[AdChoices](#) [Canvas Art](#) [Shine](#) [Portraits](#) [Fabric](#)

TULLE PORTRAITS BY BENJAMIN SHINE

Posted by [Caroline Williamson](#) on 10.29.12 in [Art](#)



Instead of painting with paint, British artist Benjamin Shine creates his portraits with tulle — you know, that netting fabric that you see on various gowns or tutus. Shine takes a single piece of tulle and proceeds to pleat, iron, and manipulate it into these hauntingly realistic portraits full of light, shadow, and dimension.



While not a portrait per se, the “Hands of Time” installation is made from over 50 meters (approx. 164 feet) of tulle. The detail created is unreal!



Hands of Time – in process



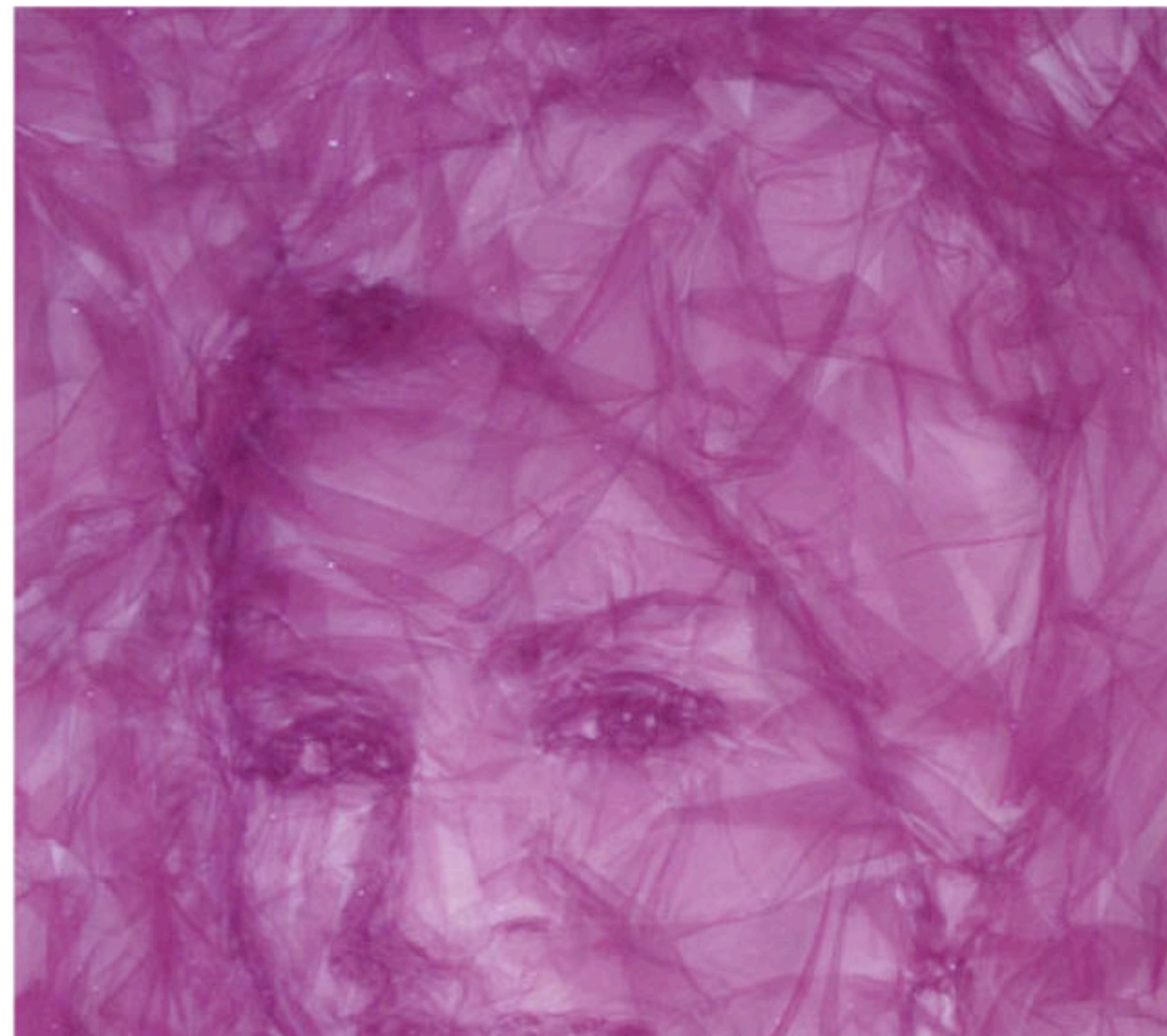
Hands of Time – close up



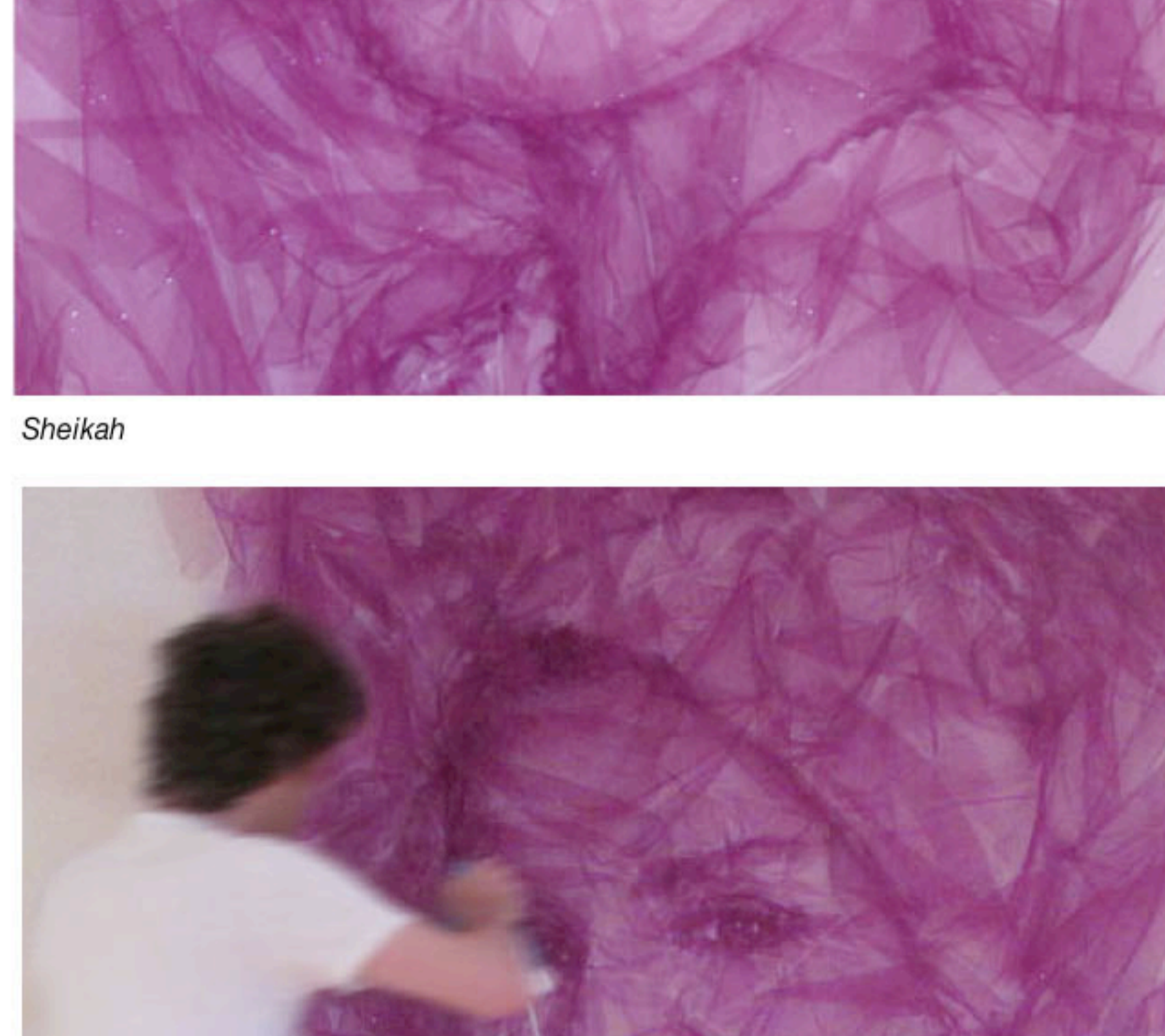
Hands of Time – detail



Hands of Time – side view

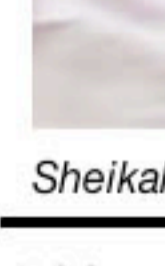


Sheikah



Sheikah – in process

6 COMMENTS



MELODY SAGE ON 10.29.2012 AT 21:09 PM

Such interesting stunning work.

[Reply to this comment](#)



ELLA DECURE ON 10.30.2012 AT 01:54 AM

OMG, OMG, OMG – this is AMAZING. Can't tear my eyes away from these... Just googled artist, more of his genius via <http://www.benjaminshine.com> this guy is truly gifted.

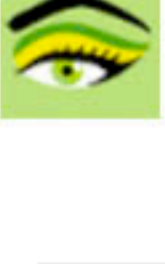
[Reply to this comment](#)



MAZ ON 10.30.2012 AT 02:38 AM

Seriously, those faces are made from fabric?? Gulp...I feel incredibly inferior. Hats off to you dude.

[Reply to this comment](#)



TIFFANY ON 10.30.2012 AT 15:55 PM

Thank you for sharing this gorgeous work, as well as the link to the artist's website. I'm amazed at the many different ways people can create portraits.



MARCUS ON 11.03.2012 AT 08:38 AM

Am truly inspired by his work, have seen the blue hands piece in person at the SCIN gallery in London – stood and stared at it for an hour.

[Reply to this comment](#)

LEAVE A COMMENT

Want your image to appear next to your comment? Get a [gravatar](#)