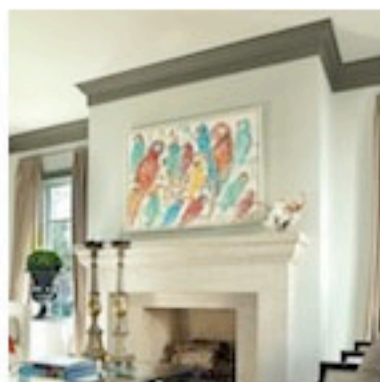




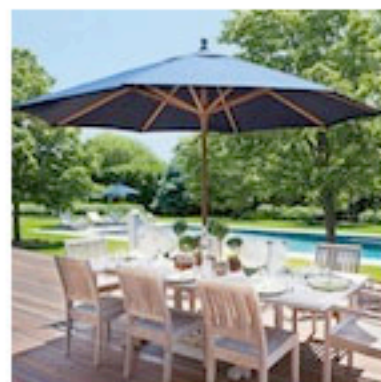
design
dialogue.



house
guest.



on view.



style
scout.

beau - tulle - ful

October 29, 2012



Why use paint when you can use...tulle? This may sound strange, but British artist **Benjamin Shine**, who studied fashion design at The Surrey Institute of Art and Design in London, has been creating three-dimensional works of art that have us in awe. Using a single piece of tulle, he pleats, irons and manipulates the textile into realistic portraits so accurate they practically pop out at you...literally.