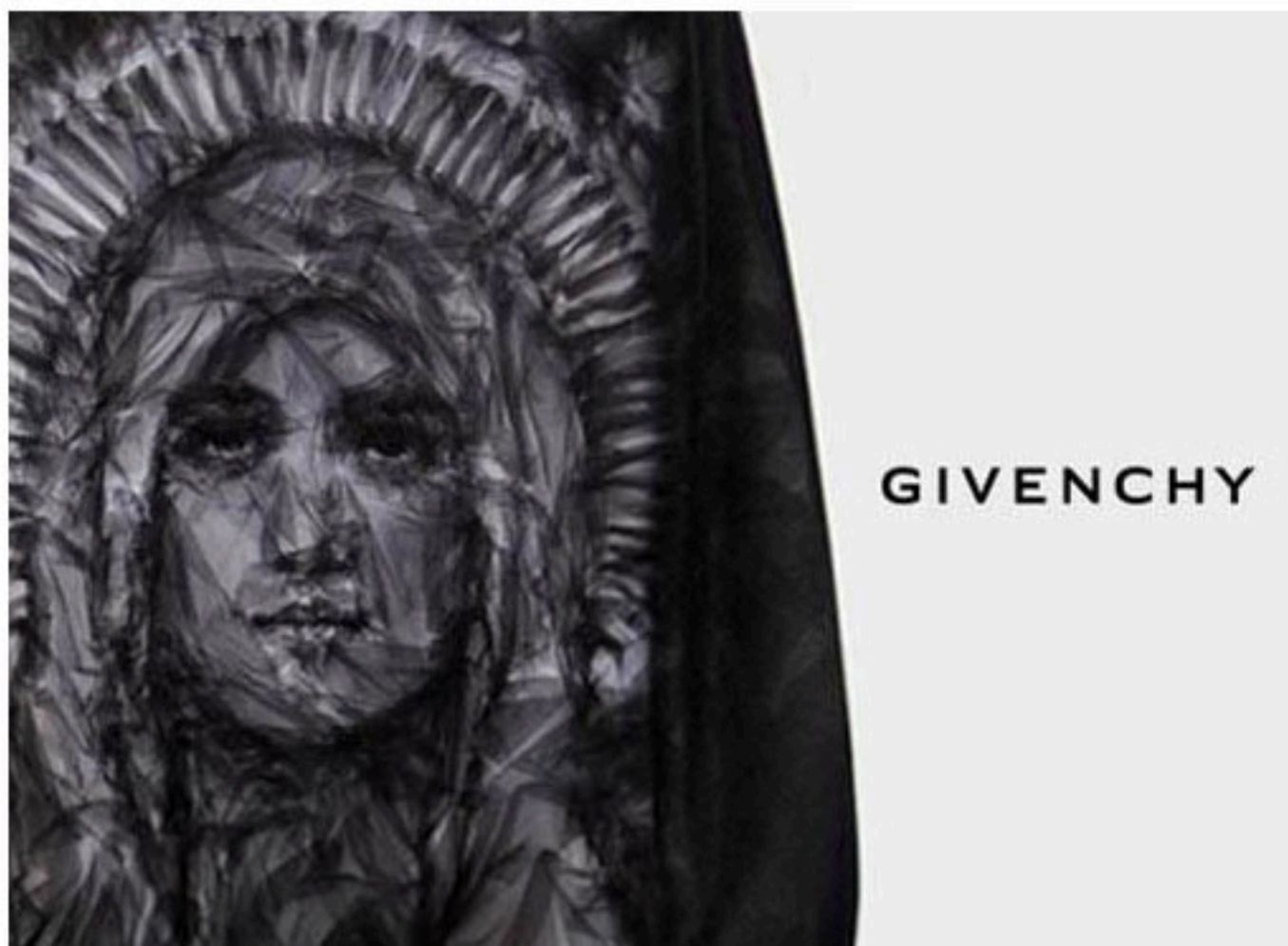


Benjamin Shine x Givenchy Sweatshirt



Givenchy has revealed a sweatshirt, in collaboration with artist Benjamin Shine which, crafted entirely from one piece of tulle. The unisex black-and-gray piece depicts an abstract Madonna shrouded in light—an interpretation of the house's Spring '13 Menswear prints reports Style

[Benjamin Shine](#) [Givenchy](#) [Sweatshirt](#) [Mens](#) [Womens](#)